

Florida Product Approval Processing of Approvals and Audits

Methods of applying for Florida Product Approval – Per Florida 61G20-3.005

Method 1 - Option A - Certification Mark or Listing

1. The Licensee obtains a CCL from WDMA. A custom CCL can be generated for a specific product line or product family to be uploaded to the Building Code Information System (BCIS) Product Approval Web-site. https://floridabuilding.org/pr/pr_default.aspx
2. The Licensee fills out the required fields on the FBC website
 - a. They choose Certification Mark or Listing for Compliance Method.

The screenshot shows the 'Application Detail' page on the Florida Product Approval website. The page includes a navigation menu with links for 'Product Approval Menu', 'Product or Application Search', 'Application List', and 'Application Detail'. The sidebar on the left is for the 'OFFICE OF THE SECRETARY'. The main content area contains the following fields:

- FL #
- Application Type
- Code Version
- Application Status
- Comments
- Archived
- Product Manufacturer
- Address/Phone/Email
- Authorized Signature
- Technical Representative
- Address/Phone/Email
- Quality Assurance Representative
- Address/Phone/Email
- Category
- Subcategory
- Compliance Method

The 'Compliance Method' dropdown menu is open, showing the following options:

- Exterior Doors
- Sliding Exterior Door Assemblies
- Certification Mark or Listing

A black arrow points from the 'Compliance Method' label to the 'Certification Mark or Listing' option.

b. They choose WDMA for the Certification Agency and Validated by.

Certification Agency Validated By: Window and Door Manufacturers Association

Referenced Standard and Year (of Standard): **Standard** AAMA/WDMA/CSA 101/I.S.2/A440 **Year** 2008

Equivalence of Product Standards Certified By:

Product Approval Method: Method 1 Option A

Date Submitted: 10/09/2012
 Date Validated: 10/16/2012
 Date Pending FBC Approval:
 Date Approved: 10/18/2012

Summary of Products

FL #	Model, Number or Name	Description
15987.1		
Limits of Use Approved for use in HVHZ: No Approved for use outside HVHZ: Yes Impact Resistant: No Design Pressure: +20/-20 Other: Glass complies with ASTM E1300, Tempered glass, Standard Performance		Certification Agency Certificate Quality Assurance Contract Expiration Date Installation Instructions Verified By: Window and Door Manufacturers Association Created by Independent Third Party: Evaluation Reports Created by Independent Third Party:

Back Next

- c. The referenced Standards are listed next for only the standards that are listed on the CCL.
- d. The Licensee uploads that CCL under Certification Agency Certificate box.
 - i. Each Hallmark CCL number extension has a specific expiration date that needs to be listed under QA Expiration Date
- e. The Licensee uploads the installation Instructions under the Installation Instructions box.
 - i. Tested - All tested substrates comply when documented as tested by the test laboratory. An example of this would be a letter stating the report results including nail fin, strap installation and screws through the jamb as indicated in the referenced reports. This application would be uploaded for an administrative review from a validation entity.
- f. The Licensee uploads the installation Instructions under the Installation Instructions box.

- i. Third Party Evaluation Report – The application may be uploaded including an evaluation report indicating the anchoring requirements and all intended substrates from a third party Florida Registered Professional Engineer. The application is uploaded as an administrative review from a validation entity.
 - ii. The Installation instructions for windows including attachment, at minimum shall include the following per FPA Rule Chapter **61G20-3: (See attached example published drawings)**
 1. The type, grade of anchor, and/or manufacturer’s anchor specifications, including minimum nominal size, minimum penetration into substrate and minimum edge distances;
 2. Type, physical dimensions, material and grade of any accessory item or strap, if applicable;
 3. Spacing of anchors, shims, accessory items and straps; and
 4. Illustrated diagrams of the attachment of the product to the structure.
 - (f) Limitations and conditions of use.
 - g. Window door and skylight products shall be manufactured under a quality assurance program audited by an approved quality assurance entity. The WDMA Hallmark Certification Program meets this requirement.
 - h. The applicant submits the application and it is listed on the BCIS site under WDMA pending applications for validation to be reviewed.
3. WDMA/AMS staff performs an administrative review of all information uploaded to the FBC website and validates if everything is correct.
4. WDMA/AMS will need to conduct Florida quality assurance plant and product inspections at intervals not to exceed 12 months
 - a. Use WD-30 and WD-40 forms and a file similar for products that are inside of the Hallmark Program that they list WDMA as the Quality Assurance Agency [This is included with the Hallmark Product Audit because all products are listed on CCL]

Method 1 - Option B or Method 1 Option D - Evaluation Report by a Florida PE

1. The Licensee uploads the third party PE Evaluation report and installation instructions to the Building Code Information System (BCIS) Product Approval Web-site. https://floridabuilding.org/pr/pr_default.aspx
2. The Licensee fills out the required fields on the FBC website
 - a. They choose Evaluation Report for Compliance Method.

Business Professional Regulation
License efficiently. Regulate fairly.

Product Approval
USER: Public User

Product Approval Menu > Product or Application Search > Application List > Application Detail

OFFICE OF THE SECRETARY

FL # [Redacted]
Application Type [New]
Code Version [Redacted]
Application Status [Approved]
Comments
Archived

Product Manufacturer Address/Phone/Email [Redacted]

Authorized Signature [Redacted]

Technical Representative Address/Phone/Email [Redacted]

Quality Assurance Representative Address/Phone/Email

Category
Subcategory

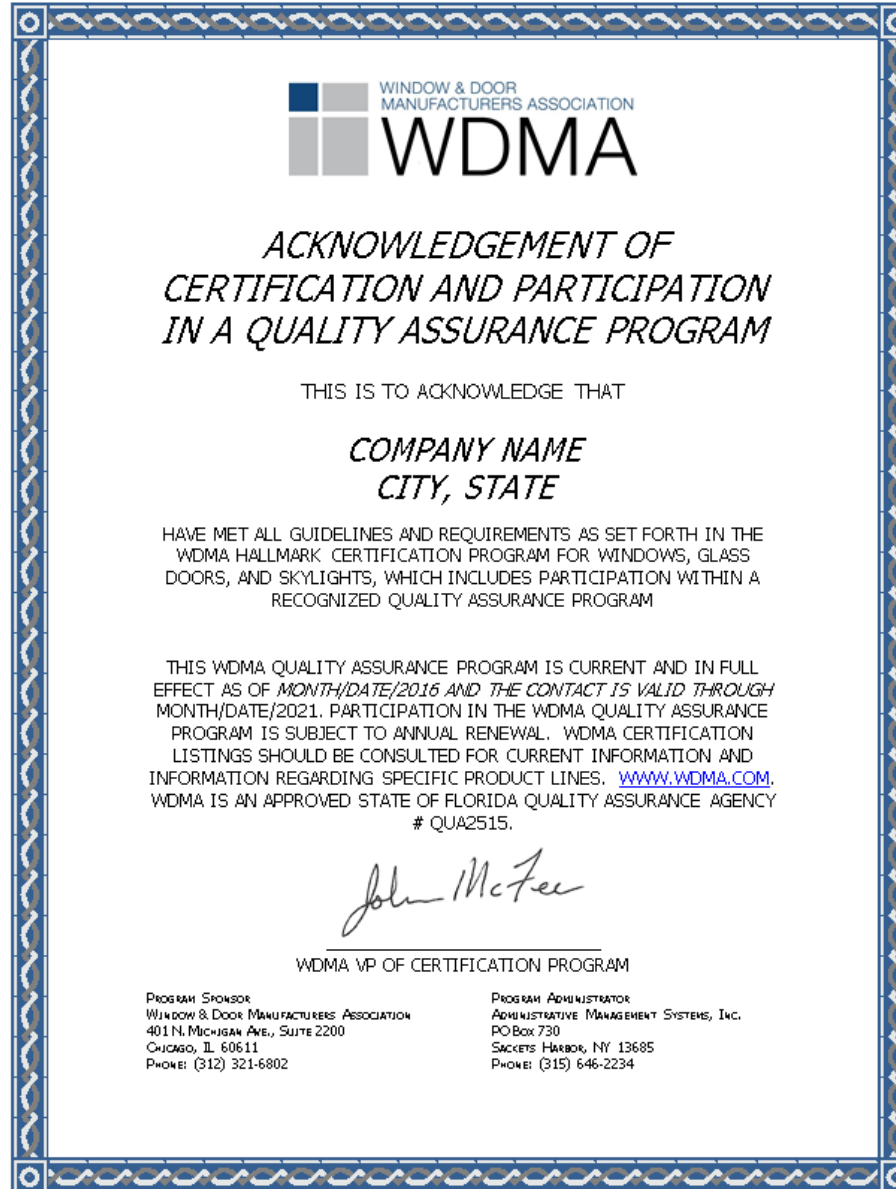
Compliance Method
Windows
Mullions
Evaluation Report from a Florida Registered Architect or a Licensed Florida Professional Engineer
 Evaluation Report - Hardcopy Received

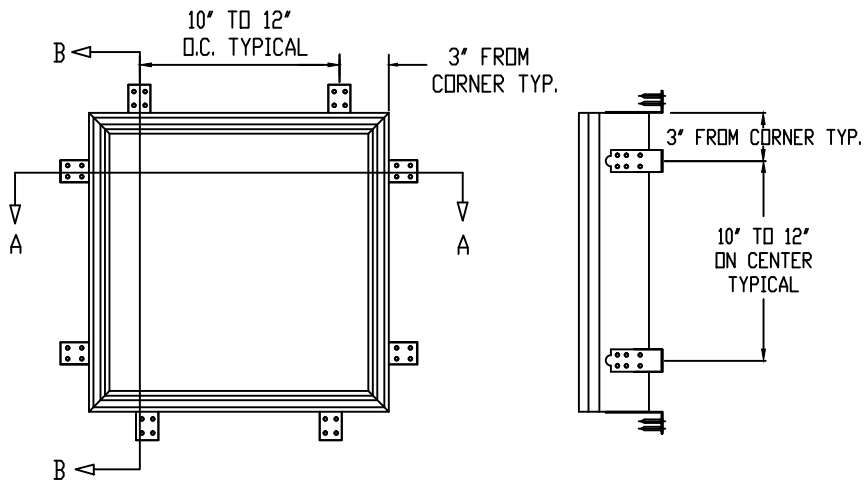
- b. They choose WDMA for the Quality Assurance Agency.
- c. They submit all this information and it goes onto the FBC site to be reviewed by parties other than WDMA.

Florida Engineer or Architect Name who developed the Evaluation Report	Warren W. Schaefer	
Florida License	PE-44135	
Quality Assurance Entity	Window and Door Manufacturers Association	
Quality Assurance Contract Expiration Date	05/30/2018	
Validated By	Terrence E. Lunn, PE	
	<input checked="" type="checkbox"/> Validation Checklist - Hardcopy Received	
Certificate of Independence	[REDACTED]	
Referenced Standard and Year (of Standard)	Standard	Year
	AAMA/WDMA/CSA 101/1.S.2/A440	2008
	ASTM E1886	2005
	ASTM E1996	2009
	TAS 201	1994
	TAS 202	1994
	TAS 203	1994
Equivalence of Product Standards Certified By		
Sections from the Code		
Product Approval Method	Method 1 Option D	
Date Submitted	08/27/2013	
Date Validated	08/29/2013	
Date Pending FBC Approval	09/09/2013	
Date Approved	10/18/2013	
Summary of Products		
FL #	Model, Number or Name	Description
16541.1	[REDACTED]	[REDACTED]
Limits of Use	Installation Instructions	
Approved for use in HVHZ: Yes	[REDACTED]	
Approved for use outside HVHZ: Yes	Verified By: Warren W. Schaefer, P.E. 44135	
Impact Resistant: Yes	Created by Independent Third Party: Yes	
Design Pressure: N/A	Evaluation Reports	
Other: Mullion size, pressure, assembly, use, limitations and installation	[REDACTED]	

- 3. WDMA/AMS will need to do a 1 per year Florida Quality Assurance Inspection that is Plant Basis and Product Basis
 - a. Use WD-30 and WD-40 forms and a file similar for products that are outside of the Hallmark Program that list WDMA as the Quality Assurance Agency [This is how it gets disconnected from the Hallmark Program because the product is not listed with a CCL]

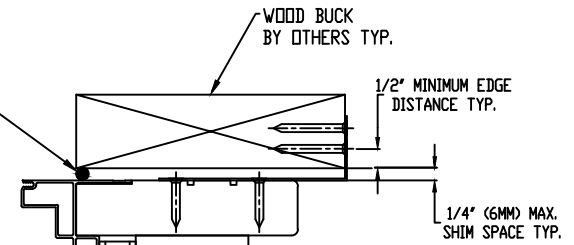
- 4. WDMA will issue an Acknowledgement of Certification and Participation in a Quality Assurance Program – See example below
 - a. Per WD-10 Fee Schedule - Florida Quality Control Program (per plant)(QA Acknowledgement) if participating in the Hallmark Certified Program \$ 1,000





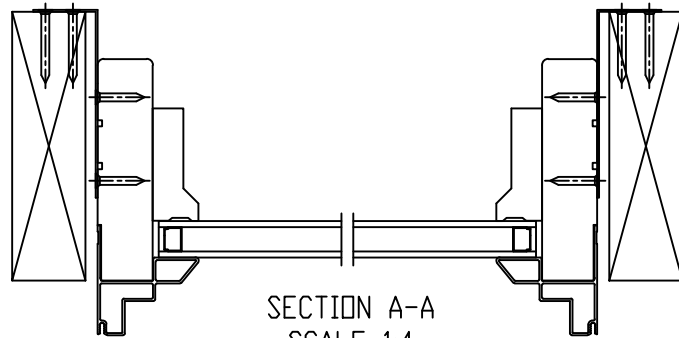
J & R
WINDOWS & DOORS
2209 & 2210 DIRECT SET
INSTALLATION CLIP

USE SILICONE SEALANT
AROUND ENTIRE PERIMETER
BETWEEN JAMB & FRAMING
MEMBER, BY OTHERS TYP.

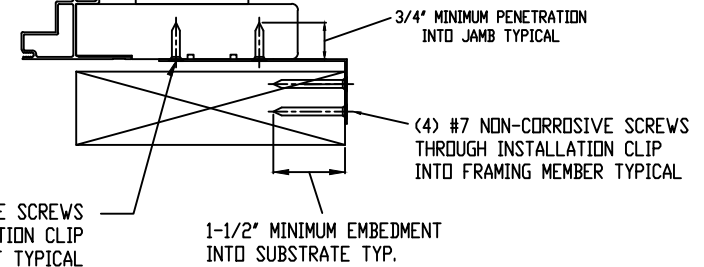
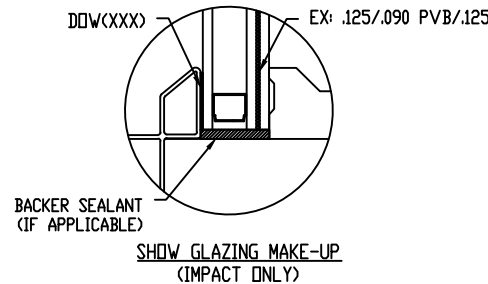


EXAMPLE CHART

FRAME SIZE	DP RATING
60" X 60"	+60 / -65



SECTION A-A
SCALE 1:4



SECTION B-B
SCALE 1:4

GENERAL NOTES:

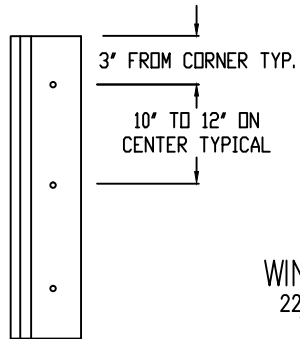
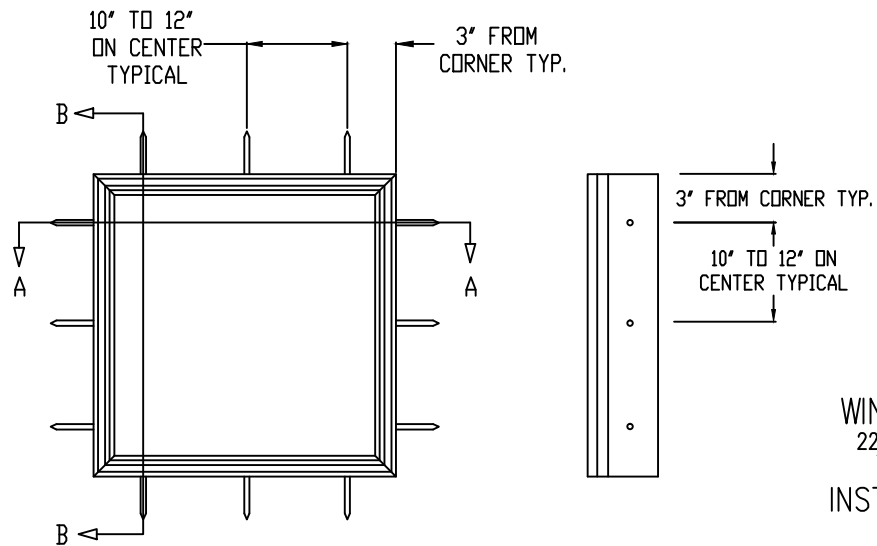
1. THESE UNITS HAVE BEEN TESTED, ANALYZED, HALLMARK CERTIFIED, AND FBC APPROVED
2. BUCKING, OPENINGS, AND BUCKLING FASTENERS MUST BE PROPERLY DESIGNED AND INSTALLED TO TRANSFER WIND LOADS TO THE STRUCTURE. UNIT WAS TESTED WITH 1/2" R.O. GAP.
3. THESE UNITS WERE TESTED WITH PONDEROSA PINE BUCKS. FLORIDA BUILDING CODE REQUIRES PRESERVATIVE TREATED SOUTHERN PINE BUCKS.
4. ALL HARDWARE AND FASTENERS SHALL BE IN ACCORDANCE WITH THESE DRAWINGS AND MAY NOT VARY UNLESS SPECIFICALLY MENTIONED ON THE DRAWINGS.
5. THE UNITS HAVE BEEN TESTED IN ACCORDANCE WITH AND MEET THE REQUIREMENTS OF THE FLORIDA BUILDING CODE.
6. IMPACT SHUTTERS ARE REQUIRED ONLY WITH NON-IMPACT UNITS.
7. ALL ANCHORS SHALL BE INSTALLED AS SPECIFIED ON THESE DRAWINGS. SPECIFIED EMBEDMENT BASE MATERIAL SHALL BE BEYOND WALL FINISH OR STUCCO.
8. TESTING OF ONE WOOD SPECIES COVERS ALL OTHER SPECIES WITH AN EQUAL OR HIGHER MODULUS OF ELASTICITY OR MODULUS OF RUPTURE.
9. TESTING OF PRIMED COVERS TESTING OF CLAD AS LONG AS CLADDING IS NOT STRUCTURAL (EXTRUDED), OR WRAPS AROUND THE GASKET.
10. TESTING OF WINDOWS AND DOORS WITH A GIVEN WIDTH AND THICKNESS OF SOLID STILES AND RAILS, COVERS PRODUCTS WITH WIDER AND THICKER SOLID STILES AND RAILS PROVIDED THAT CONSTRUCTION DETAILS ARE CONSISTANT
11. ANY GEOMETRIC SHAPE THAT FITS WITHIN THE TESTED/APPROVED SIZE FOR A PARTICULAR PRODUCT TYPE IS QUALIFIED BY THE RECTANGULAR SHAPE(S) PROVIDED THAT THE FRAME, SASH, LEAVES, PANELS, HARDWARE, HARDWARE LOCK COMPONENTS, AND CONSTRUCTION REMAIN THE SAME.
12. ALL SHAPED UNITS MUST FIT INSCRIBED INTO THE ALLOWABLE RECTANGULAR UNITS AND BE GOVERNED BY ALLOWABLE DESIGN PRESSURE OR THE RESPECTIVE RECTANGULAR UNIT.
13. SHIMS NEED TO BE LOCATED A MAXIMUM OF 7" FROM EACH CORNER AND A MAXIMUM OF 7" FROM EACH ANCHOR LOCATION.
14. THIS PRINT IS FOR STRUCTURAL PERFORMANCE ONLY. FOR FLASHING & SEALING REQUIREMENTS, REFER TO THE INSTALLATION INSTRUCTIONS
15. IF CHEMICALLY TREATED LUMBER IS USED FOR BUCK MATERIAL, FASTENERS INTO THE BUCK MUST BE A MINIMUM OF 0.90 OZ/FT² ZINC HOT DIPPED GALVANIZED OR STAINLESS STEEL TYPE 304
16. GLASS COMPLIES WITH ASTM E1300

(4) #7 NON-CORROSIVE SCREWS
THROUGH INSTALLATION CLIP
INTO UNIT TYPICAL

THIS SCHEDULE ADDRESSES ONLY THE FASTENERS REQUIRED TO ANCHOR THE WINDOW TO ACHIEVE THE RATED DESIGN PRESSURE. THOROUGHLY READ AND FOLLOW MANUFACTURERS INSTALLATION INSTRUCTIONS RECEIVED WITH UNIT. THIS GUIDE DOES NOT ADDRESS THE SEALING CONSIDERATIONS THAT MAY ARISE IN DIFFERENT WALL CONDITIONS.

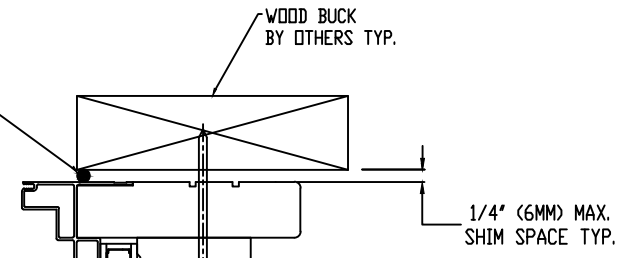
PROPERTY OF J & R WINDOWS INC. DWG. IS NOT TO BE REPRINTED OR SUBMITTED FOR USE OUTSIDE OF J & R WINDOWS INC. ALL RIGHTS RESERVED	J & R WINDOWS & DOORS
MATERIAL:	PROD. DIRECT SET
DIE NO.	TITLE: INSTALLATION INSTR.
CUT STOCK SIZE	DWG. NO: 9-20-15
FINISH	SCALE: NONE
PROJ. NO.	DRAWN BY: J. ROWE

DATE	REV.	DESCRIPTION



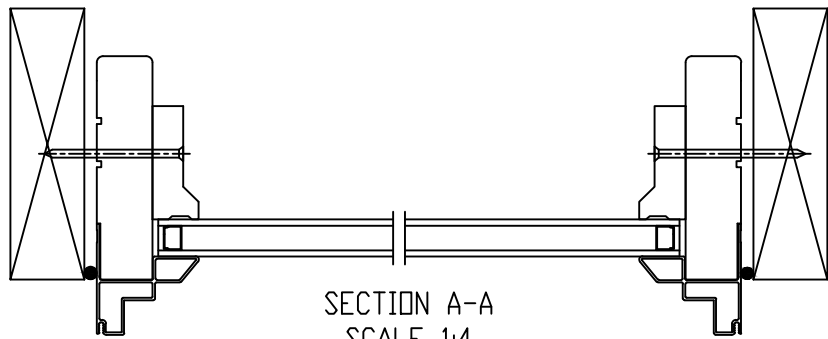
J & R
WINDOWS & DOORS
2209 & 2210 DIRECT SET
THROUGH JAMB
INSTALLATION METHOD

USE SILICONE SEALANT
AROUND ENTIRE PERIMETER
BETWEEN JAMB & FRAMING
MEMBER, BY OTHERS TYP.

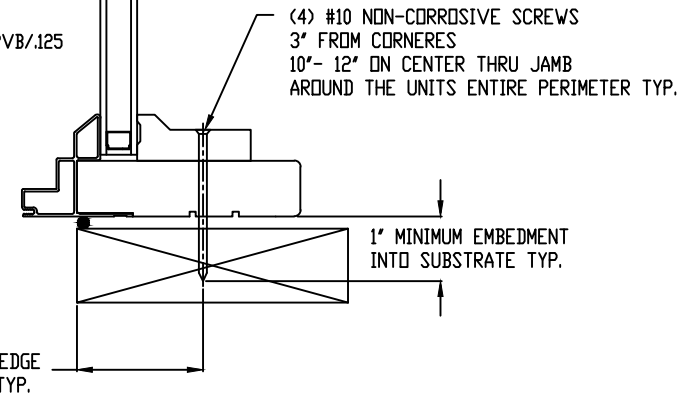
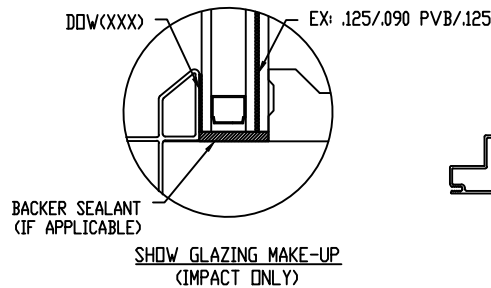


EXAMPLE CHART

FRAME SIZE	DP RATING
60' X 60'	+60 / -65



SECTION A-A
SCALE 1:4



SECTION B-B
SCALE 1:4

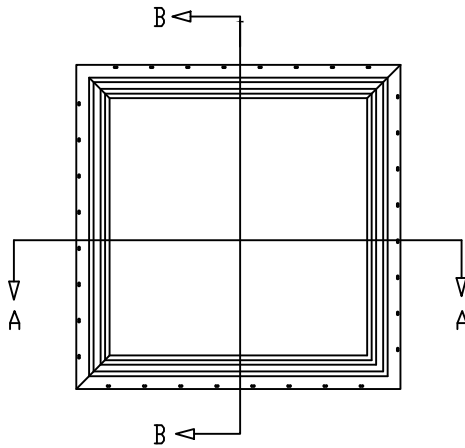
GENERAL NOTES:

- THESE UNITS HAVE BEEN TESTED, ANALYZED, HALLMARK CERTIFIED, AND FBC APPROVED
- BUCKING, OPENINGS, AND BUCKLING FASTENERS MUST BE PROPERLY DESIGNED AND INSTALLED TO TRANSFER WIND LOADS TO THE STRUCTURE. UNIT WAS TESTED WITH 1/2" R.D. GAP.
- THESE UNITS WERE TESTED WITH PONDEROSA PINE BUCKS. FLORIDA BUILDING CODE REQUIRES PRESERVATIVE TREATED SOUTHERN PINE BUCKS.
- ALL HARDWARE AND FASTENERS SHALL BE IN ACCORDANCE WITH THESE DRAWINGS AND MAY NOT VARY UNLESS SPECIFICALLY MENTIONED ON THE DRAWINGS.
- THE UNITS HAVE BEEN TESTED IN ACCORDANCE WITH AND MEET THE REQUIREMENTS OF THE FLORIDA BUILDING CODE.
- IMPACT SHUTTERS ARE REQUIRED ONLY WITH NON-IMPACT UNITS.
- ALL ANCHORS SHALL BE INSTALLED AS SPECIFIED ON THESE DRAWINGS. SPECIFIED EMBEDMENT BASE MATERIAL SHALL BE BEYOND WALL FINISH OR STUCCO.
- TESTING OF ONE WOOD SPECIES COVERS ALL OTHER SPECIES WITH AN EQUAL OR HIGHER MODULUS OF ELASTICITY OR MODULUS OF RUPTURE.
- TESTING OF PRIMED COVERS TESTING OF CLAD AS LONG AS CLADDING IS NOT STRUCTURAL (EXTRUDED), OR WRAPS AROUND THE GASKET.
- TESTING OF WINDOWS AND DOORS WITH A GIVEN WIDTH AND THICKNESS OF SOLID STILES AND RAILS, COVERS PRODUCTS WITH WIDER AND THICKER SOLID STILES AND RAILS PROVIDED THAT CONSTRUCTION DETAILS ARE CONSISTANT
- ANY GEOMETRIC SHAPE THAT FITS WITHIN THE TESTED/APPROVED SIZE FOR A PARTICULAR PRODUCT TYPE IS QUALIFIED BY THE RECTANGULAR SHAPE(S) PROVIDED THAT THE FRAME, SASH, LEAVES, PANELS, HARDWARE, HARDWARE LOCK COMPONENTS, AND CONSTRUCTION REMAIN THE SAME.
- ALL SHAPED UNITS MUST FIT INSCRIBED INTO THE ALLOWABLE RECTANGULAR UNITS AND BE GOVERNED BY ALLOWABLE DESIGN PRESSURE OR THE RESPECTIVE RECTANGULAR UNIT.
- SHIMS NEED TO BE LOCATED A MAXIMUM OF 7" FROM EACH CORNER AND A MAXIMUM OF 7" FROM EACH ANCHOR LOCATION.
- THIS PRINT IS FOR STRUCTURAL PERFORMANCE ONLY. FOR FLASHING & SEALING REQUIREMENTS, REFER TO THE INSTALLATION INSTRUCTIONS
- IF CHEMICALLY TREATED LUMBER IS USED FOR BUCK MATERIAL, FASTENERS INTO THE BUCK MUST BE A MINIMUM OF 0.90 OZ/FT² ZINC HOT DIPPED GALVANIZED OR STAINLESS STEEL TYPE 304

THIS SCHEDULE ADDRESSES ONLY THE FASTENERS REQUIRED TO ANCHOR THE WINDOW TO ACHIEVE THE RATED DESIGN PRESSURE. THOROUGHLY READ AND FOLLOW MANUFACTURERS INSTALLATION INSTRUCTIONS RECEIVED WITH UNIT. THIS GUIDE DOES NOT ADDRESS THE SEALING CONSIDERATIONS THAT MAY ARISE IN DIFFERENT WALL CONDITIONS.

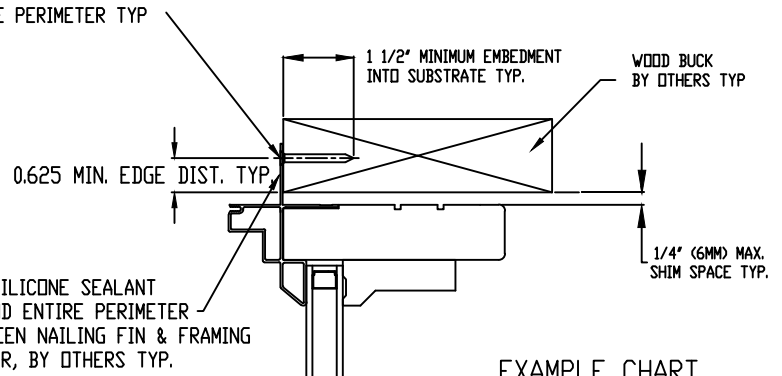
PROPERTY OF J & R WINDOWS INC. DWG. IS NOT TO BE REPRINTED OR SUBMITTED FOR USE OUTSIDE OF J & R WINDOWS INC. ALL RIGHTS RESERVED	J & R WINDOWS & DOORS
MATERIAL:	PROD. DIRECT SET
DIE NO.	TITLE: INSTALLATION INSTR.
CUT STOCK SIZE	DWG. NO: 9-20-15
FINISH	SCALE: NONE
PROJ. NO.	DRAWN BY: J. ROWE

DATE	REV.	DESCRIPTION



#6 NON-CORROSSIVE SCREWS
 1-1/2" MIN. PENETRATION INTO FRAMING MEMBER
 3" FROM CORNERS, 8-10" ON CENTER THROUGH
 NAILING FIN AROUND THE UNITS ENTIRE PERIMETER TYP

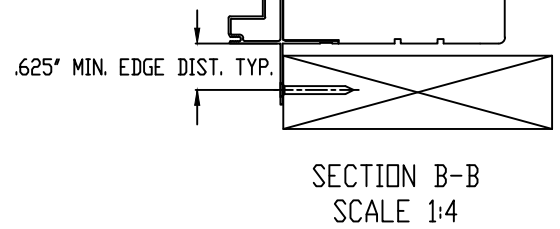
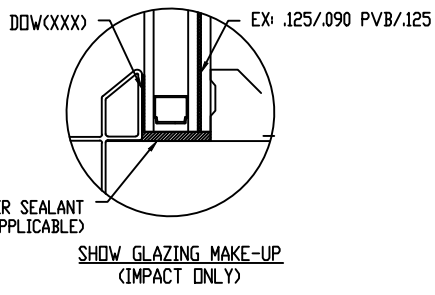
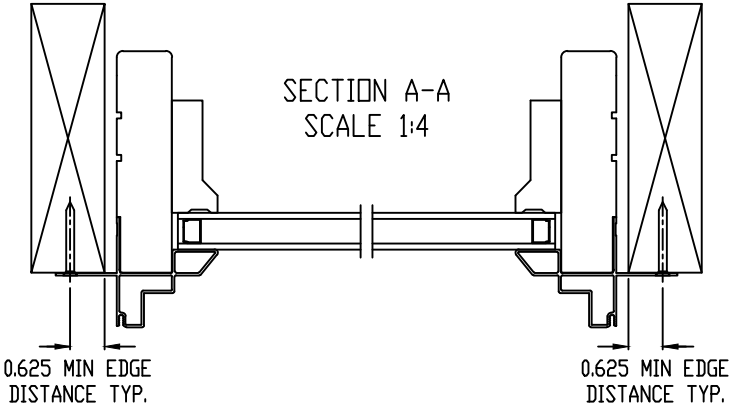
J & R
 WINDOWS & DOORS
 2209 & 2210 DIRECT SET
 NAILING FIN INSTALLATION



USE SILICONE SEALANT
 AROUND ENTIRE PERIMETER
 BETWEEN NAILING FIN & FRAMING
 MEMBER, BY OTHERS TYP.

EXAMPLE CHART

FRAME SIZE	DP RATING
60" X 60"	+60 / -65



- GENERAL NOTES:
1. THESE UNITS HAVE BEEN TESTED, ANALYZED, HALLMARK CERTIFIED, AND FBC APPROVED
 2. BUCKING, OPENINGS, AND BUCKLING FASTENERS MUST BE PROPERLY DESIGNED AND INSTALLED TO TRANSFER WIND LOADS TO THE STRUCTURE. UNIT WAS TESTED WITH 1/2" R.O. GAP.
 3. THESE UNITS WERE TESTED WITH PONDEROSA PINE BUCKS. FLORIDA BUILDING CODE REQUIRES PRESERVATIVE TREATED SOUTHERN PINE BUCKS.
 4. ALL HARDWARE AND FASTENERS SHALL BE IN ACCORDANCE WITH THESE DRAWINGS AND MAY NOT VARY UNLESS SPECIFICALLY MENTIONED ON THE DRAWINGS.
 5. THE UNITS HAVE BEEN TESTED IN ACCORDANCE WITH AND MEET THE REQUIREMENTS OF THE FLORIDA BUILDING CODE.
 6. IMPACT SHUTTERS ARE REQUIRED ONLY WITH NON-IMPACT UNITS.
 7. ALL ANCHORS SHALL BE INSTALLED AS SPECIFIED ON THESE DRAWINGS. SPECIFIED EMBEDMENT BASE MATERIAL SHALL BE BEYOND WALL FINISH OR STUCCO.
 8. TESTING OF ONE WOOD SPECIES COVERS ALL OTHER SPECIES WITH AN EQUAL OR HIGHER MODULUS OF ELASTICITY OR MODULUS OF RUPTURE.
 9. TESTING OF PRIMED COVERS TESTING OF CLAD AS LONG AS CLADDING IS NOT STRUCTURAL (EXTRUDED), OR WRAPS AROUND THE GASKET.
 10. TESTING OF WINDOWS AND DOORS WITH A GIVEN WIDTH AND THICKNESS OF SOLID STILES AND RAILS, COVERS PRODUCTS WITH WIDER AND THICKER SOLID STILES AND RAILS PROVIDED THAT CONSTRUCTION DETAILS ARE CONSISTANT
 11. ANY GEOMETRIC SHAPE THAT FITS WITHIN THE TESTED/APPROVED SIZE FOR A PARTICULAR PRODUCT TYPE IS QUALIFIED BY THE RECTANGULAR SHAPE(S) PROVIDED THAT THE FRAME, SASH, LEAVES, PANELS, HARDWARE, HARDWARE LOCK COMPONENTS, AND CONSTRUCTION REMAIN THE SAME.
 12. ALL SHAPED UNITS MUST FIT INSCRIBED INTO THE ALLOWABLE RECTANGULAR UNITS AND BE GOVERNED BY ALLOWABLE DESIGN PRESSURE OR THE RESPECTIVE RECTANGULAR UNIT.
 13. SHIMS NEED TO BE LOCATED A MAXIMUM OF 7" FROM EACH CORNER AND A MAXIMUM OF 7" FROM EACH ANCHOR LOCATION.
 14. THIS PRINT IS FOR STRUCTURAL PERFORMANCE ONLY. FOR FLASHING & SEALING REQUIREMENTS, REFER TO THE INSTALLATION INSTRUCTIONS
 15. IF CHEMICALLY TREATED LUMBER IS USED FOR BUCK MATERIAL, FASTENERS INTO THE BUCK MUST BE A MINIMUM OF 0.90 OZ/FT² ZINC HOT DIPPED GALVANIZED OR STAINLESS STEEL TYPE 304
 16. GLASS COMPLIES WITH ASTM E1300

THIS SCHEDULE ADDRESSES ONLY THE FASTENERS REQUIRED TO ANCHOR THE WINDOW TO ACHIEVE THE RATED DESIGN PRESSURE. THOROUGHLY READ AND FOLLOW MANUFACTURERS INSTALLATION INSTRUCTIONS RECEIVED WITH UNIT. THIS GUIDE DOES NOT ADDRESS THE SEALING CONSIDERATIONS THAT MAY ARISE IN DIFFERENT WALL CONDITIONS.

PROPERTY OF J & R WINDOWS INC. DWG. IS NOT TO BE REPRINTED OR SUBMITTED FOR USE OUTSIDE OF J & R WINDOWS INC. ALL RIGHTS RESERVED	J & R WINDOWS & DOORS
MATERIAL:	PROD. DIRECT SET
DIE NO.	TITLE: INSTALLATION INSTR.
CUT STOCK SIZE	DWG. NO: 9-20-15
FINISH	SCALE: NONE
PROJ. NO.	DRAWN BY: J. ROWE

DATE	REV.	DESCRIPTION